

# Cotterman®



## STEP STANDS



**500 lb load rating**  
**One, two and three step models**  
**Available in steel or aluminum**

# STEEL STEP STANDS

## Product Features:

- 45 degree climbing angle
- 500 lbs. capacity
- Serrated tread
- Gray powder coat finish



**Model No.**  
**1302N2626A3E10B1C1**

**Step Count:** 2  
**Overall Dimensions (inches)**  
 23D x 27W x 20H  
**Tread Size (inches)**  
 10D x 24W  
**Welded**  
**Rubber Feet**  
**Packaging:** Shrinkwrapped



**Model No.**  
**1302N2626A3E10B3C1**

**Step Count:** 2  
**Overall Dimensions (inches)**  
 23D x 27W x 20H  
**Tread Size (inches)**  
 10D x 24W  
**Welded**  
**Rubber Feet and Casters**  
**Packaging:** Shrinkwrapped



**Model No.**  
**1403N2628A3E10B1C1**

**Step Count:** 3  
**Overall Dimensions (inches)**  
 34D x 28W x 30H  
**Tread Size (inches)**  
 10D x 24W  
**Unassembled**  
**Rubber Feet**  
**Packaging:** Box



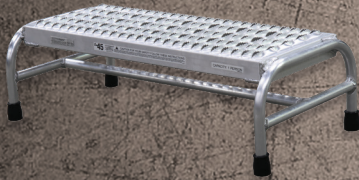
**Model No.**  
**1403N3234A3E10B1C1**

**Step Count:** 3  
**Overall Dimensions (inches)**  
 34D x 34W x 30H  
**Tread Size (inches)**  
 10D x 30W  
**Unassembled**  
**Rubber Feet**  
**Packaging:** Box

# ALUMINUM STEP STANDS

## Product Features:

- 45 degree climbing angle
- 500 lbs. capacity
- Serrated tread



**Model No.**  
**1801N3232A3E12B1C50**

**Step Count:** 1  
**Overall Dimensions (inches)**  
 17D x 33W x 10H  
**Tread Size (inches)**  
 12D x 30W  
**Welded**  
**Rubber Feet**  
**Packaging:** Shrinkwrapped



**Model No.**  
**1802N2626A3E10B1C50**

**Step Count:** 2  
**Overall Dimensions (inches)**  
 23D x 27W x 20H  
**Tread Size (inches)**  
 10D x 24W  
**Welded**  
**Rubber Feet**  
**Packaging:** Shrinkwrapped



**Model No.**  
**1903N2628A3E10B1C50**

**Step Count:** 3  
**Overall Dimensions (inches)**  
 34D x 28W x 30H  
**Tread Size (inches)**  
 10D x 24W  
**Unassembled**  
**Rubber Feet**  
**Packaging:** Box



**Model No.**  
**1803N3232A3E10B1C50**

**Step Count:** 3  
**Overall Dimensions (inches)**  
 33D x 33W x 30H  
**Tread Size (inches)**  
 10D x 30W  
**Welded**  
**Rubber Feet**  
**Packaging:** Shrinkwrapped

- F.O.B. Crosswell, MI; Atlanta, GA; Bakersfield, CA; Arlington, TX

# Cotterman®

www.cotterman.com • info@cotterman.com

130 Seltzer Rd.  
 Crosswell, MI 48422  
 810-679-4400 • FAX 810-679-4510  
 TOLL FREE 800-5-LADDER  
 8 A.M. – 5 P.M. MON. THRU FRI.  
 (EASTERN STANDARD TIME)