

Cotterman®

SMT-100  
3/6/20

# STEP MASTER™

MODULAR ACCESS SYSTEM

PATENTS PENDING

ALL NEW!



**1,000<sub>LB.</sub>**

BETWEEN TOWERS - 5-1 SAFETY FACTOR

THE NEW **STANDARD** IN MODULAR STABILITY

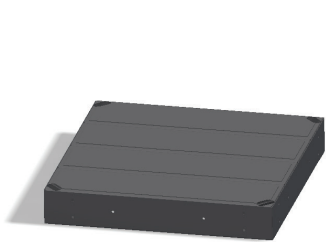
# STEP MASTER™

MODULAR ACCESS SYSTEM

**Cotterman®**  
QUALITY LADDERS **MADE IN THE USA** SINCE 1925

## 5 MAJOR COMPONENTS. INFINITE POSSIBILITIES.

The **ALL NEW** Cotterman® StepMaster™ Modular Access System is comprised of five major components that can be configured to meet almost any application. With a 1,000 lb. load capacity\* the StepMaster™ is "The **NEW STANDARD** in Modular Stability."



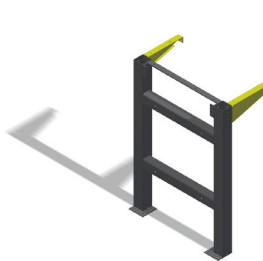
### STEPMASTER™ PLATFORM

38" x 38" platform. Platforms can be attached to each other in spans of 4 between towers.



### STEPMASTER™ STILE

Currently available in 2 thru 6 step configurations. Stile has a 10" Rise and an easy 45° climb angle. Handrails are included. Meets OSHA/ANSI Standards.

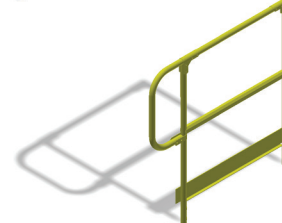


### STEPMASTER™ TOWER

Hi-Strength support towers keep the STEPMASTER™ strong and stable. 4 platform maximum between towers. Designed to be bolted to the ground for Stability.

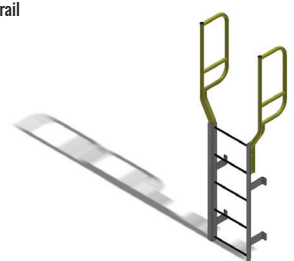


**GUARDRAIL CONNECTOR**  
Allows for a continuous, Level handrail throughout the platform.



### STEPMASTER™ GUARDRAIL

1.5" tube, heavy duty guardrails with 4" toeboards keeps personnel safe and secure on the platform. Meets or exceeds OSHA/ANSI guardrail requirements.



### STEPMASTER™ FIXED LADDER

Genuine Cotterman® Fixed Ladder can be mounted anywhere on the unit providing stable, safe and easy access in areas where a stile with steps may not fit.



## STEPMASTER™ MODULAR ACCESS SYSTEM

The most trusted name in Industrial/Commercial Ladders introduces the StepMaster™ Modular Access System for environments where a standard ladder or work platform won't do the job. StepMaster™ can be configured in almost any combination to allow the user to build a custom walkway that fits around or over almost anything! Plus, it's a Cotterman® product, so you can rest assured that it's been **Cotterman® Tested** to very stringent requirements and meets applicable OSHA/ANSI standards. With over 5,400 hours of engineering design and testing you can count on the StepMaster™ to be **Cotterman® Tough**. Like all of our products, the **ALL NEW** StepMaster™ **Cotterman® Trusted**.

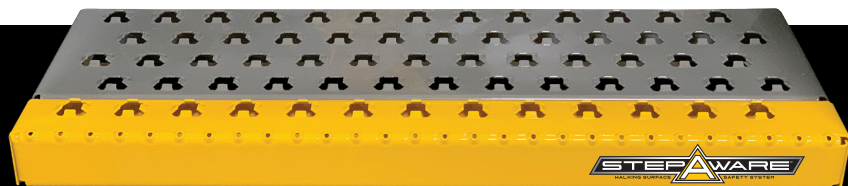
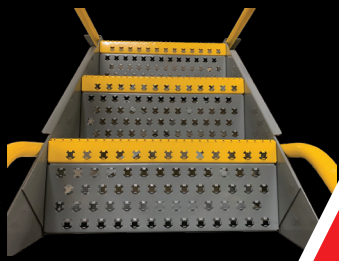
**Cotterman® TESTED. Cotterman® TOUGH. Cotterman® TRUSTED.**

ALSO INTRODUCING:



High Visibility treads to increase user confidence and safety when Ascending or Descending Cotterman® ladders.

**LIFETIME WARRANTY**



Shown: 2-piece, reinforced StepAware™ Tread with ALL NEW Octo-Tread™ Ultra Slip Resistant Tread and perforated nosing for added grip on the edge of the step where it's needed most.

# Cotterman®

www.cotterman.com • info@cotterman.com TOLL FREE 800-5-LADDER

130 Seltzer Rd.  
Croswell, MI 48422  
810-679-4400  
FAX 810-679-4510

\*Between Towers, up to a 4 platform span. Tested to a 5-1 Safety Ratio.

© Copyright 2020