

ASSEMBLY OF THE
No. 1 - STRAIGHT SIDE WOOD LADDER
 OR
No. 2 - BENT SIDE WOOD LADDER

TOOLS REQUIRED FOR ASSEMBLY	
SAFETY GLASSES	(2) 1 / 2 " WRENCHES OR SOCKETS
STEP LADDER OF APPROPRIATE HEIGHT	(2) 7 / 16" WRENCHES OR SOCKETS
HACKSAW	FLAT HEAD SCREW DRIVER

ASSEMBLY PARTS – INCLUDED IN PACKAGING

STRAIGHT or BENT LADDER WITH #57 WHEEL ASSEMBLY		TRACK and BRACKETS	
1	LADDER	AS ORDERED	STRAIGHT TRACK
1	TOP SHELF	AS ORDERED	CURVED TRACK
2	UPPER FIXTURES	AS REQUIRED	L 10 – BRACKET
4	# 14 WOOD SCREWS	AS REQUIRED	L 11 – BRACKET
4	¼ - 20 x 1 ½ FLAT HEAD MACHINE SCREW	AS REQUIRED	L 11T – BRACKET
8	HEX LOCKNUTS	AS REQUIRED	L 15 – BRACKET
8	¼ FLAT WASHERS	AS REQUIRED	L 17 – BRACKET
4	¼ - 20 x 1 ½ RD. HEAD MACHINE SCREWS	AS REQUIRED	L 56 – BRACKET
1	LOWER RIGHT FIXTURE		
1	LOWER LEFT FIXTURE		
2	5 INCH WHEELS		
2	5/16 – 18 x 2 HEX HEAD CAP SCREW		
2	5/16 – 18 HEX LOCKNUT		

WARNING:

ASSEMBLY OF THESE TYPES OF LADDERS CAN BE INHERENTLY DANGEROUS. PLEASE TAKE ALL PRECAUTIONS NECESSARY DURING THE ASSEMBLY PROCESS. ALWAYS USE A SEPARATE LADDER TO FINISH ASSEMBLY IN HIGH PLACES. NEVER CLIMB A LADDER THAT IS NOT COMPLETELY ASSEMBLED. DO NOT ASSEMBLE OR USE A LADDER WITH MISSING OR DAMAGED PARTS. USE PROPER LIFTING MECHANICS WHEN ASSEMBLING A LADDER. WATCH FOR OVER HEAD ELECTRICAL HAZARDS AND OBSTRUCTIONS.

INSTALLATION OF THE TRACK
FOR A STRAIGHT SIDE OR BENT SIDE
WOOD LADDER

INSTALLATION WILL DEPEND UPON THE TYPE OF BRACKETS FURNISHED. THE BRACKETS FOR SUPPORTING THE TRACK ARE USUALLY SECURED ON THE SHELVING UPRIGHTS OR ON A HORIZONTAL SURFACE, SUCH AS THE TOP OF A SHELF. THE BRACKETS ARE USUALLY LOCATED AT ABOUT 3-FOOT INTERVALS.

- WHEN THE BRACKETS ARE FASTENED TO THE UPRIGHTS, THE TRACK SHOULD USUALLY BE POSITIONED SO THE TOP OF THE BRACKETS ARE LEVEL WITH THE TOP OF THE SELF.

NOTE: SEE THE ATTACHED PACKING LIST AND TAG ON LADDER FOR THE TRACK HEIGHT FOR WHICH YOUR LADDER WAS DESIGNED.

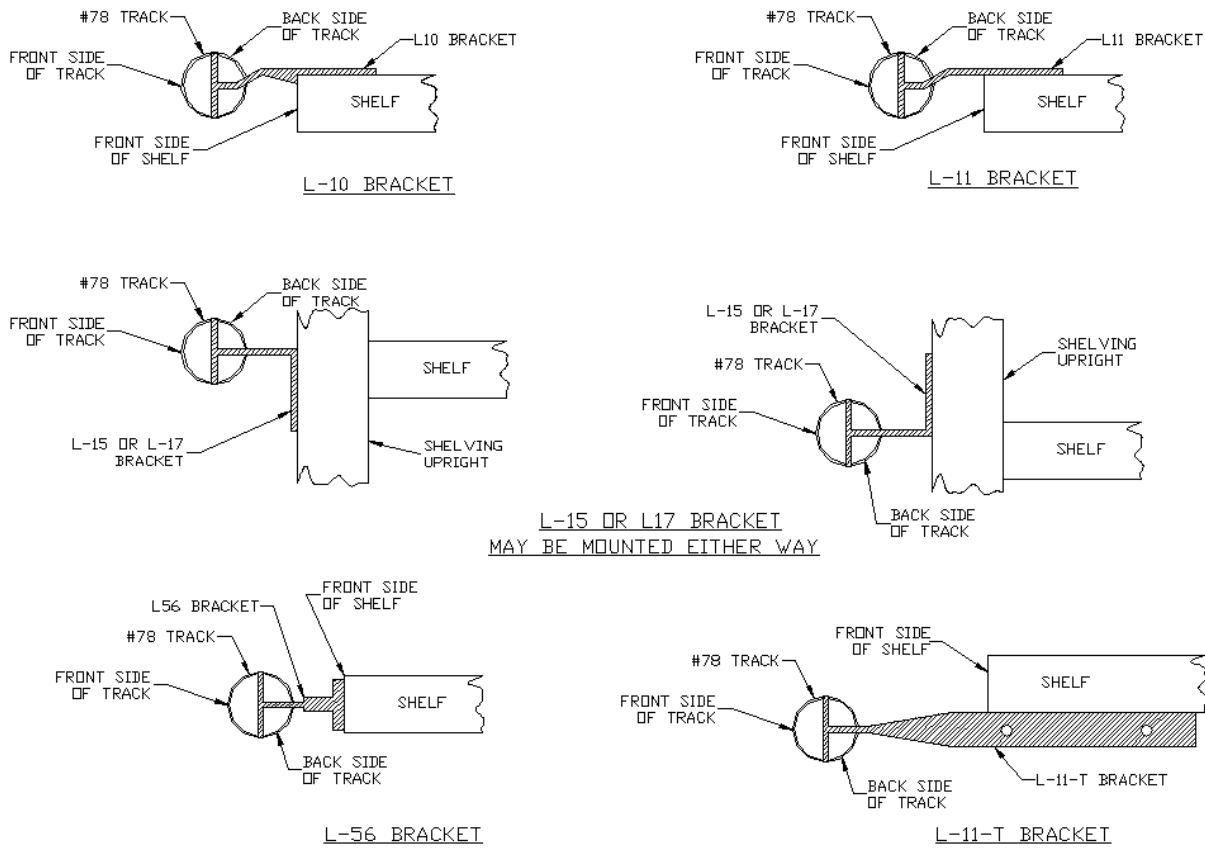
STEP 1 – LAYOUT FOR THE TRACK

- START BY LAYING THE TRACK FROM END TO END ON THE FLOOR IN FRONT OF THE SHELVING UNIT.
 - IF ONE END OF THE SHELVING IS AGAINST A WALL, START FROM THAT END.
 - MAKE SURE TO ALIGN THE FIRST END OF THE TRACK WITH THE END OF THE SHELVING UNIT.
 - IF NECESSARY, REARRANGE THE VARIOUS SECTIONS SO THAT NONE OF THE JOINTS OCCUR AT THE BRACKETS, OR WITHIN 5 INCHES OF THE BRACKETS.

STEP 2 – PLACEMENT OF THE BRACKETS – (SEE DRAWING A)

- INSERT THE REQUIRED NUMBER OF CENTER BRACKETS FOR THE FIRST LENGTH OF
- ADJUST THE CENTER BRACKETS TO THE APPROXIMATE LOCATIONS WHERE THEY WILL BE ATTACHED TO THE SHELVING UNIT.

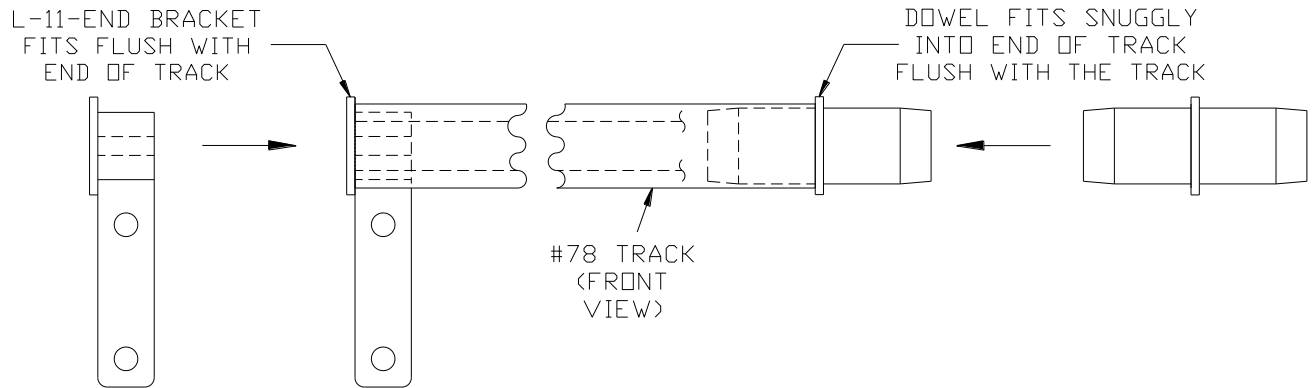
INSTALLATION POSSIBILITIES FOR THE DIFFERENT STYLES OF BRACKETS



DRAWING A

STEP 3 – PLACEMENT OF THE END BRACKET – (SEE DRAWING B)

- a) ONCE THE CENTER BRACKETS HAVE BEEN INSERTED AND ADJUSTED TO THEIR PROPER LOCATIONS, TAKE THE CORRESPONDING END BRACKET AND INSERT THE STEEL DISC FLUSH AGAINST THE END OF THE TRACK.



DRAWING B

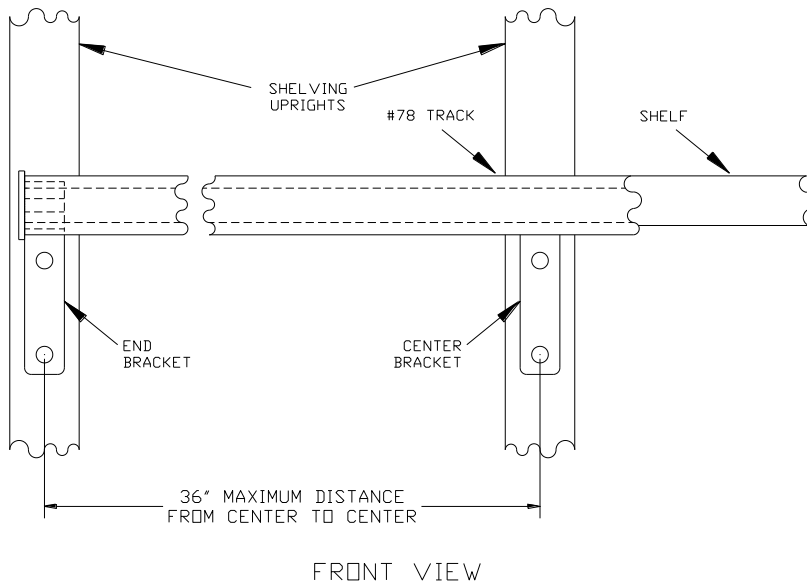
DRAWING C

STEP 4 – DOWEL ATTACHMENT – (SEE DRAWING C)

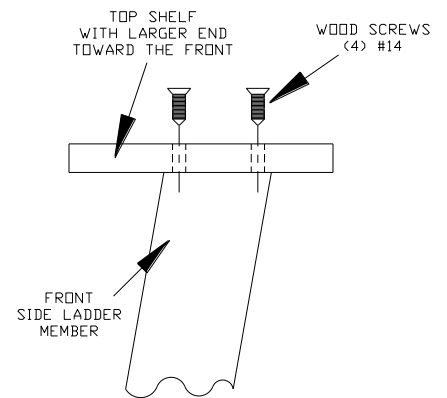
- a) ON THE OPPOSITE END, INSERT ONE OF THE JOINT DOWELS. NOTE: THE SHOULDER SHOULD FIT TIGHTLY AGAINST THE END OF THE TRACK.

STEP 5 – ATTACHING THE FIRST SECTION OF TRACKING – (SEE DRAWING D)

- a) USING THE INSERTED BRACKETS, BOLT OR SCREW AND DOWEL THE FIRST SECTION OF TRACK TO THE SHELVING.



DRAWING D



DRAWING E

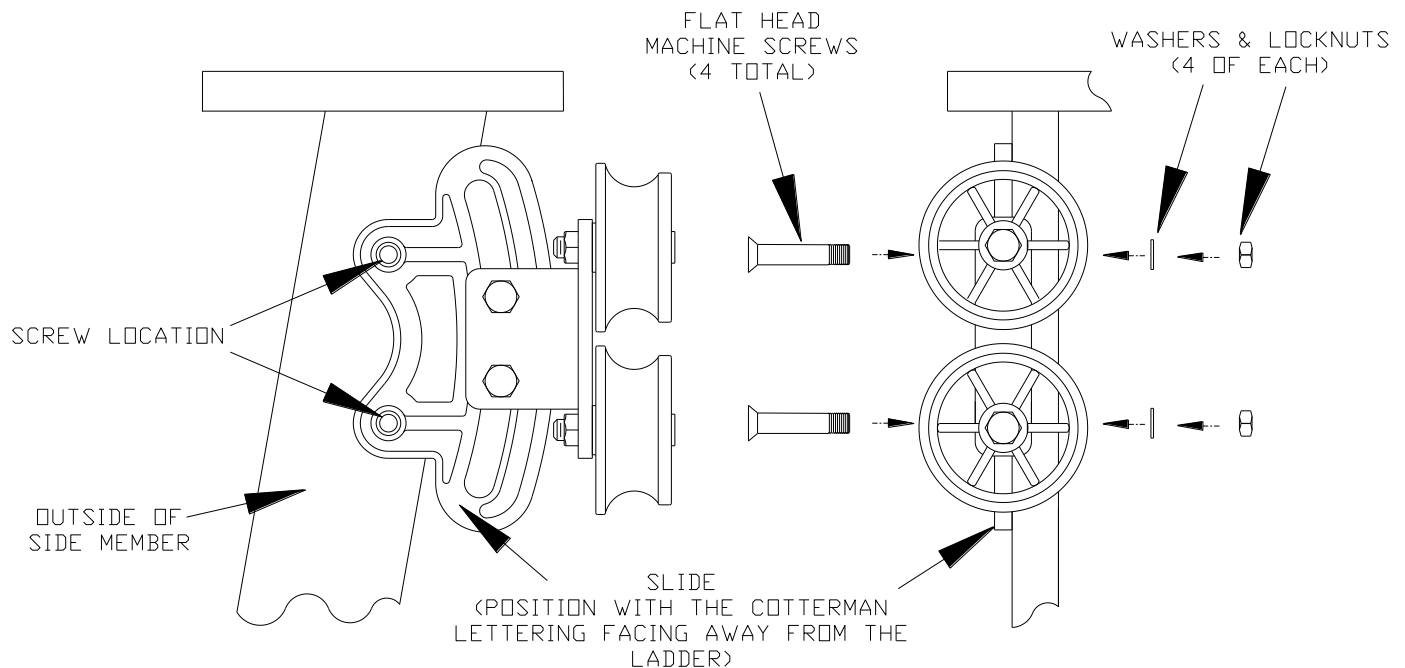
STEP 6 – TOP SHELF ATTACHMENT – (SEE DRAWING E)

- a) UNPACK THE LADDER.
- b) ATTACH THE TOP SHELF TO THE SIDE MEMBERS BY INSERTING (4) #14 WOOD SCREWS INTO THE PREDRILLED HOLES. NOTE: THE LARGER PROJECTION OF THE SHELF SHOULD BE TOWARDS THE FRONT.
- c) A MISALIGNMENT MAY OCCUR IF THE SIDE MEMBERS BOW.
- d) TO CORRECT THIS, INSERT A SCREW THRU THE SHELF AND PARTIALLY INTO THE SIDE MEMBER.
- e) PUSH OR PULL THE OTHER SIDE INTO POSITION BY HAND AND INSERT THE OTHER SCREWS.

(NOTE: IF THE SCREWDRIVER BURRS THE HEAD OF THE SCREW - LIGHTLY TAP WITH A HAMMER TO FLATTEN.)

STEP 7 – ATTACHING TWO UPPER SLIDE FIXTURE ASSEMBLIES – (SEE DRAWING F)

- a) ATTACH THE UPPER SLIDE ASSEMBLIES TO THE OUTSIDE OF THE SIDE MEMBERS USING THE PRE-DRILLED HOLES AND (2) 1/4-20 X 1 1/2 FLAT HEAD MACHINE SCREWS WITH (2) FLAT WASHERS AND (2) LOCKNUTS PER SIDE.

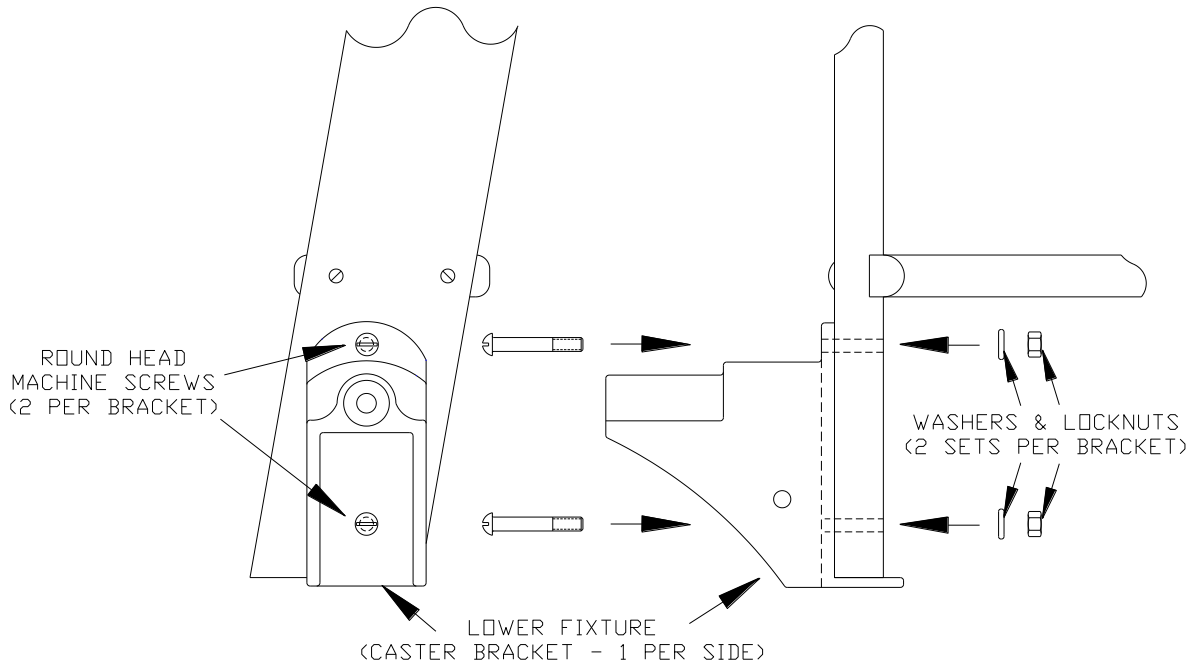


DRAWING F

(NOTE: LETTERING NEEDS TO BE FACING OUTWARD ON UPPER SLIDE FIXTURE)

STEP 8 – ATTACHING TWO LOWER CASTER BRACKET ASSEMBLIES –(SEE DRAWING G)

- a) ATTACH THE CASTER BRACKET ASSEMBLIES TO THE BOTTOM OF THE SIDE MEMBERS, USING (2) 1/4 - 20 x 1 1/2 ROUND HEAD MACHINE SCREW AND (2) FLAT WASHERS AND (2) LOCKNUTS PER BRACKET.

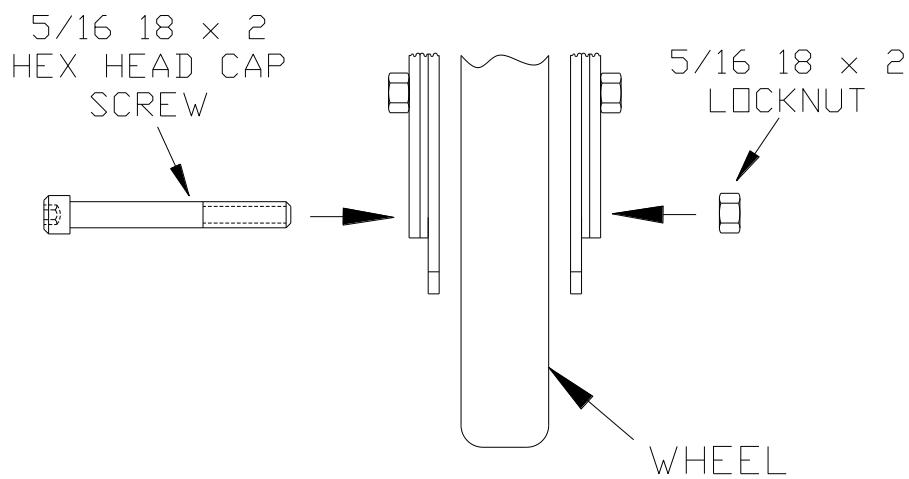


DRAWING G

STEP 9 – WHEEL ASSEMBLY – (SEE DRAWING H)

- a) CENTER THE 5" WHEEL BETWEEN THE FORKS ON THE CASTER BRACKET AND TIGHTEN USING A 5/16 - 18 x 2 HEX HEAD CAP SCREW AND 5/16 - 18 HEX LOCKNUT.
- b) REPEAT FOR THE OTHER CASTER BRACKET.

NOTE: WHEEL MUST HAVE FREEDOM TO ROTATE, ONLY TIGHTEN ENOUGH TO SECURE THE WHEEL ASSEMBLY.



DRAWING H

STEP 10 – LADDER INSTALLATION ON THE TRACK

- a) ROLL THE LADDER ONTO THE SECTION OF TRACK THAT HAS BEEN INSTALLED.
- b) TEST THE MOVEMENT OF THE LADDER BY MAKING SURE THE LADDER CAN BE PULLED OUT TO THE PROPER CLIMBING ANGLE.
- c) ALSO, MAKE SURE THE LADDER CAN BE PUSHED AGAINST THE SHELVING UNIT AT THE BOTTOM.

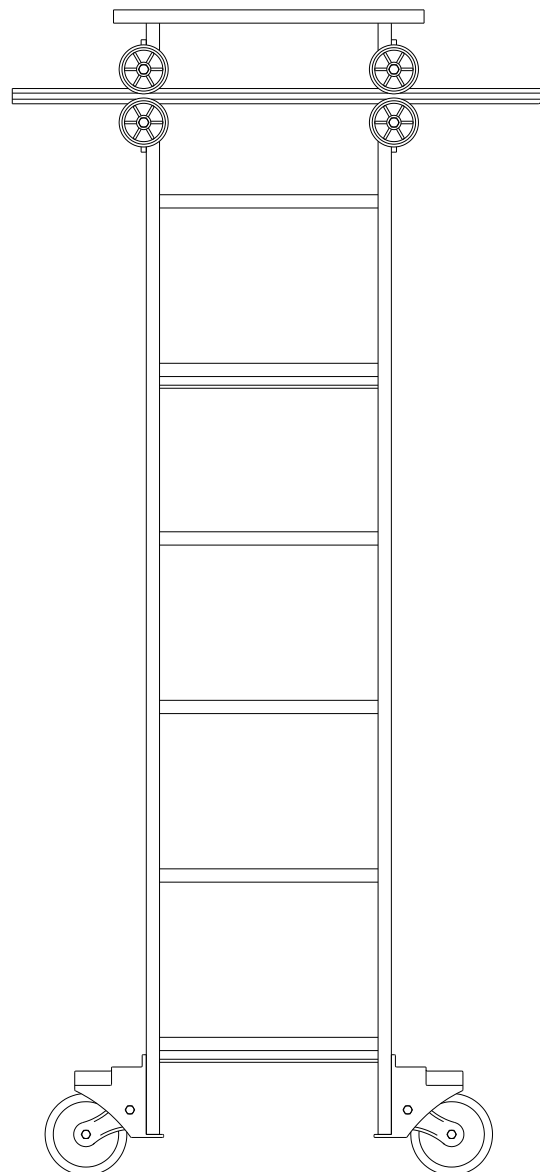
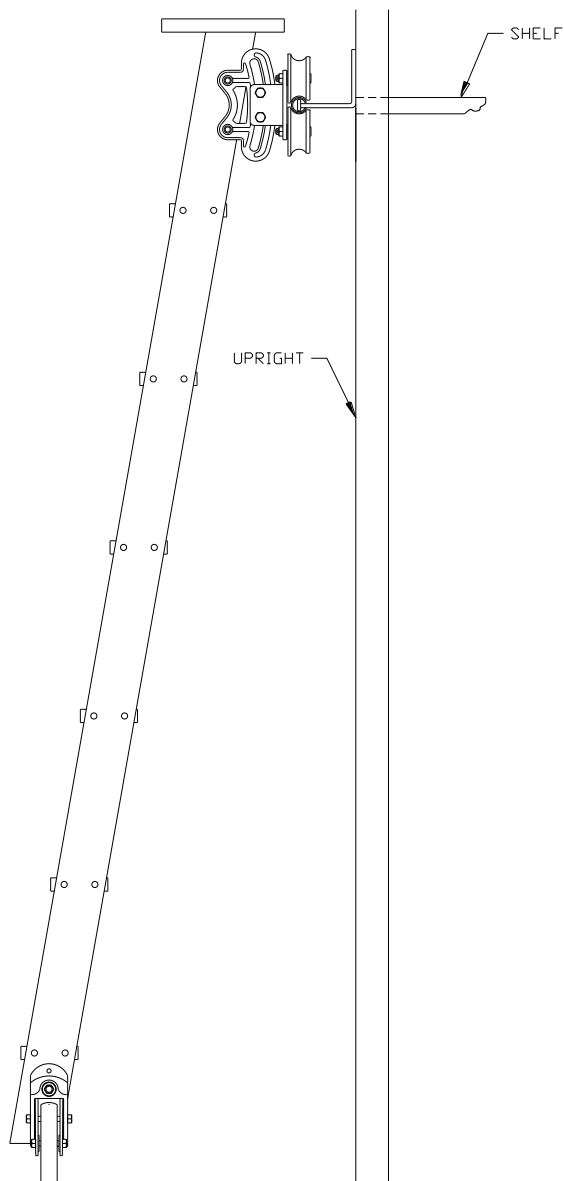
STEP 11 – ADDITIONAL TRACK SECTION INSTALLATION

- a) SLIDE THE REQUIRED BRACKETS IN THE NEXT LENGTH OF TRACK.
- b) PUSH THAT LENGTH OF TRACK OVER THE EXPOSED DOWEL OF THE ALREADY ATTACHED SECTION.
- c) THE SECTION END SHOULD BUTT AGAINST THE DOWEL SHOULDER.
- d) THEN FASTEN THE BRACKETS TO THE SHELVING.
- e) CONTINUE UNTIL ALL THE TRACK LENGTHS IN THAT RUN, EXCEPT THE LAST, ARE INSTALLED.

STEP 12 – TRACK COMPLETION

- a) MEASURE THE LENGTH OF TRACK NEEDED TO COMPLETE THE RUN, ALLOWING FOR PROPER PLACEMENT OF THE END BRACKET.
- b) CUT OFF THE TRACK TO THE REQUIRED LENGTH WITH A HACKSAW.
- c) SLIDE IN THE REQUIRED NUMBER OF CENTER BRACKETS AND INSERT THE OTHER END BRACKET WITH THE STEEL DISC FLUSH AGAINST THE END OF THE TRACK.
- d) INSTALL THE LAST LENGTH OF TRACK TO THE LAST DOWEL AS PREVIOUSLY DESCRIBED.
- e) THEN FASTEN THE BRACKETS TO THE SHELVING.

BE SURE TO READ THE SAFETY INSTRUCTIONS ATTACHED TO LADDER.



**QUESTIONS OR INQUIRIES SHOULD BE DIRECTED TO:
COTTERMAN CO.
P.O. BOX 168
CROSWELL, MICHIGAN 48422
PHONE: (810) 679-4400 FAX: (810) 679-4510
E-MAIL: info@cotterman.com**