

# STOCKNSTORE

## FOLDING ROLLING LADDERS



OPEN-READY TO USE FOLDED-TO STORE

**Cotterman co.**

Division of Material Control, Inc.

P.O. BOX 168 • 130 SELTZER RD.  
CROSWELL, MI 48422

810-679-4400 • FAX 810-679-4510

TOLL FREE 800-552-3337

<http://www.cotterman.com> Email: [info@cotterman.com](mailto:info@cotterman.com)

Scan code with your  
smartphone for a video  
of the Cotterman®  
StockNStore





# NEW STOCKN-STORE

**FOLDING ROLLING LADDERS FOR  
OFFICE, RETAIL, AND INDUSTRIAL  
USE, EASY TO STORE AND  
READY TO USE**

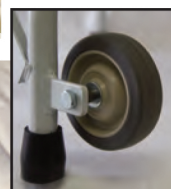
30" HIGH HANDRAILS ARE  
STANDARD ON ALL MODELS



LADDERS TILT EASILY  
IN SETUP OR  
FOLDED FORM



IN FOLDED  
FORM THE  
LADDER  
STORES IN  
LESS THAN  
10" WIDE  
SPACES



COTTERMAN  
PERFORMA  
PERFORATED  
TREAD FOR  
GENERAL  
USE IS OUR  
MOST SLIP  
RESISTANT  
TREAD

The New Cotterman StockN-Store ladder provides an easy convenient means to access shelving or other work areas. This lightweight ladder easily folds into a compact assembly for quick rolling movement and storage. In use, the ladder opens smoothly during the transition from rolling to setting down on rubber feet, the hinges automatically locking in place. For added convenience, the ladder tilts and rolls in the open as well as closed position.

The welded construction meets the strength and dimensional requirements of applicable OSHA and ANSI standards.



LADDER CLOSES TO FOLDED FORM  
WITH CABLE RELEASE SYSTEM FOR  
WEIGHT ACTIVATED HINGES







SOLID TREAD WITH RUBBER MATTING IS GREAT FOR OFFICES OR RETAIL ENVIRONMENTS



GRIP STRUT TREAD PROVIDES MAXIMUM SLIP RESISTANCE IN INDUSTRIAL ENVIRONMENTS





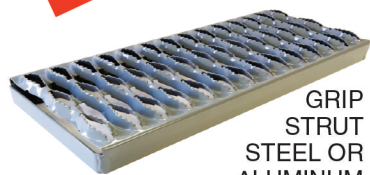
# STOCK N STORE

# NEW

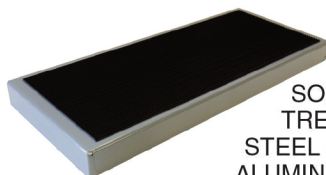
## FEATURES:

- Available in 2, 3 and 4 step models, all with 16" wide by 7" deep steps and 10" deep top step
- Cable release system for weight activated hinges with no pinch points
- Easily folded in one simple motion
- PVC coated aircraft cable
- Rolls in KD form or setup
- Compact and easily stored
- Powder coated in an array of colors
- Available in steel or aluminum
- Three tread types
- 4" casters with Delrin bearings
- 30" handrails
- Ships parcel freight

Handrail cross tube standard on aluminum models



GRIP STRUT  
STEEL OR ALUMINUM



SOLID TREAD  
STEEL OR ALUMINUM



STEEL PERF



ALUMINUM PERF



## STEEL STOCK N STORE

ALUMINUM OR STEEL IN YOUR CHOICE OF COLORS

MODEL NO.	TREAD TYPE	STEPS	PLAT-FORM HT.	OVER-ALL HT.	STEP WIDTH IN.	BASE WIDTH IN.	BASE LENGTH IN.	CAP. LBS.	WEIGHT
SAS2A6E10C1P6	Perf	2	1' 8"	4' 2"	16	21	22	350	33
SAS3A6E10C1P6	Perf	3	2' 6"	5'	16	21	28	350	40
SAS4A6E10C1P6	Perf	4	3' 4"	5' 10"	16	21	34	350	48
SAS2A2E10C1P6	Solid W/Ribbed Mat	2	1' 8"	4' 2"	16	21	22	350	37
SAS3A2E10C1P6	Solid W/Ribbed Mat	3	2' 6"	5'	16	21	28	350	46
SAS4A2E10C1P6	Solid W/Ribbed Mat	4	3' 4"	5' 10"	16	21	34	350	55
SAS2A3E10C1P6	Grip Strut	2	1' 8"	4' 2"	16	21	22	350	35
SAS3A3E10C1P6	Grip Strut	3	2' 6"	5'	16	21	28	350	43
SAS4A3E10C1P6	Grip Strut	4	3' 4"	5' 10"	16	21	34	350	51

## ALUMINUM STOCK N STORE\*

MODEL NO.	TREAD TYPE	STEPS	PLAT-FORM HT.	OVER-ALL HT.	STEP WIDTH IN.	BASE WIDTH IN.	BASE LENGTH IN.	CAP. LBS.	WEIGHT
SASA2A10E10C50P6	Perf	2	1' 8"	4' 2"	16	21	22	350	17
SASA3A10E10C50P6	Perf	3	2' 6"	5'	16	21	28	350	25
SASA4A10E10C50P6	Perf	4	3' 4"	5' 10"	16	21	34	350	32
SASA2A2E10C50P6	Solid W/Ribbed Mat	2	1' 8"	4' 2"	16	21	22	350	18
SASA3A2E10C50P6	Solid W/Ribbed Mat	3	2' 6"	5'	16	21	28	350	26
SASA4A2E10C50P6	Solid W/Ribbed Mat	4	3' 4"	5' 10"	16	21	34	350	33
SASA2A3E10C50P6	Grip Strut	2	1' 8"	4' 2"	16	21	22	350	14
SASA3A3E10C50P6	Grip Strut	3	2' 6"	5'	16	21	28	350	21
SASA4A3E10C50P6	Grip Strut	4	3' 4"	5' 10"	16	21	34	350	29

\*Handrail cross bar is standard on Aluminum models.

## Cotterman Co.

Div. of Material Control, Inc.  
www.cotterman.com • info@cotterman.com



"CHARGE IT"

### WARRANTY

All Cotterman products are guaranteed against defects in workmanship and materials for a period of one (1) year after shipment.

HOURS: 8 A.M. - 5 P.M. MON. THRU FRI.  
(eastern standard time)

COTTERMAN COMPANY  
IS PROUD TO BE A  
MEMBER OF THE  
FOLLOWING  
ASSOCIATIONS:



MEMBER  
SCAFFOLD  
INDUSTRY  
ASSOCIATION

National  
Safety  
Council

MEMBER  
ANSI

MHIA  
The Material Handling Industry of America  
MEMBER COMPANY

130 SELTZER RD.  
P.O. BOX 168  
CROSWELL, MI 48422-0168

1-810-679-4400  
FAX 810-679-4510  
TOLL FREE 800-552-3337

• F.O.B. CROSWELL MI  
• TERMS: NET 30 DAYS • TAX NOT INCLUDED  
• PRICES SUBJECT TO CHANGE WITHOUT NOTICE