

ASSEMBLY OF THE KNOCKED-DOWN LADDERS:

3 - 7 STEP WITH 10", 12", 20", 24" & 30" DEEP TOP STEP AND SAFELOCK

TOOLS REQUIRED FOR ASSEMBLY	
1	RUBBER MALLET
1	7/16" WRENCHES
2	9/16" WRENCHES
2	1/2" WRENCHES

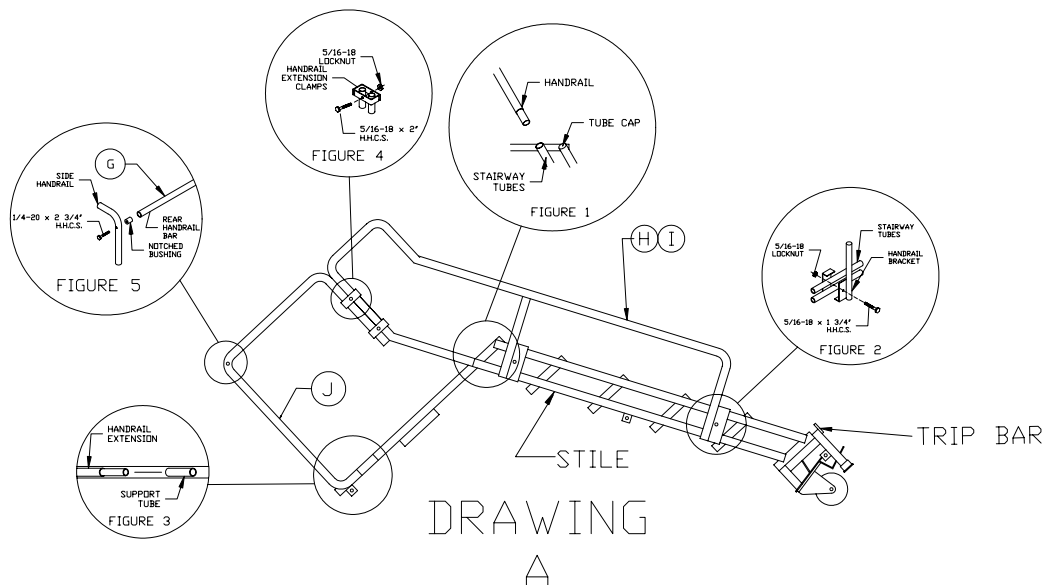
WARNING:

ASSEMBLY OF THESE TYPES OF LADDERS IS INHERENTLY DANGEROUS. PLEASE TAKE ALL PRECAUTIONS NECESSARY DURING THE ASSEMBLY PROCESS. ALWAYS USE A SEPARATE LADDER TO FINISH ASSEMBLY IN HIGH PLACES. NEVER CLIMB A LADDER THAT IS NOT COMPLETELY ASSEMBLED. A FALL RESULTING IN SERIOUS INJURY OR DEATH CAN OCCUR IF ANOTHER LADDER IS NOT USED DURING ASSEMBLY. USE PROPER LIFTING MECHANICS WHEN ASSEMBLING A LADDER. NEVER ASSEMBLE A LADDER ALONE.

STEP 1 – INSTALL HANDRAILS

UNPACKAGE AND SORT ALL COMPONENTS. START BY PLACING THE LADDER STILE ON THE FLOOR, WITH THE STILES FACING UPWARD. SLIP THE HANDRAILS (H, I) INTO STAIRWAY TUBES (**DRAWING A, FIGURE 1**). USE THE RUBBER MALLET AS NEEDED FOR MATING PARTS. CLAMP HANDRAILS TO OUTSIDE OF STAIRWAY TUBES USING HANDRAIL BRACKETS, 5/16-18 x 1 3/4" HEX HEAD CAP SCREWS AND LOCKNUTS (**DRAWING A, FIGURE 2**).

NOTE: DO NOT TIGHTEN ANY BOLTS UNTIL INSTRUCTED TO DO SO.



STEP 2 – EXTENDED PLATFORMS ONLY

SLIP HANDRAIL EXTENSION PANELS (J) INTO SUPPORT TUBES LOCATED ON THE SIDE OF THE PLATFORM (**DRAWING A, FIGURE 3**). USE THE RUBBER MALLET AS NEEDED FOR MATING PARTS. CLAMP HANDRAIL EXTENSION PANEL TO HANDRAIL PANELS USING EXTENSION CLAMPS AND 5/16-18 x 2" HEX HEAD CAP SCREWS & LOCKNUTS (SEE **DRAWING A, FIGURE 4**).

NOTE: THE HANDRAILS EXTENSION PANELS ARE NOT ON THE STANDARD PLATFORM LADDERS

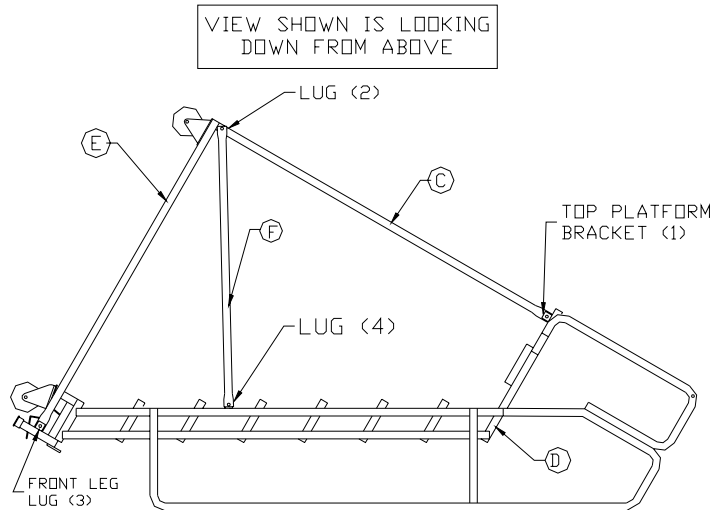
STEP 3

INSERT NOTCHED BUSHING INTO EACH END OF REAR HANDRAIL BAR (G). POSITION BAR BETWEEN MOUNTING HOLES ON TOP OF SIDE HANDRAILS USING (2) 1/4-20 x 2 3/4" HEX HEAD CAP SCREWS (DRAWING A, FIGURE 5).

YOU MAY NOW TIGHTEN ALL HANDRAIL BOLTS.

STEP 4

LAY STAIRWAY UNIT HANDRAIL SIDE DOWN. BE SURE TO PLACE STAIRWAY ON A PROTECTIVE SURFACE SO THE FINISH DOES NOT GET DAMAGED (SEE DRAWING B).

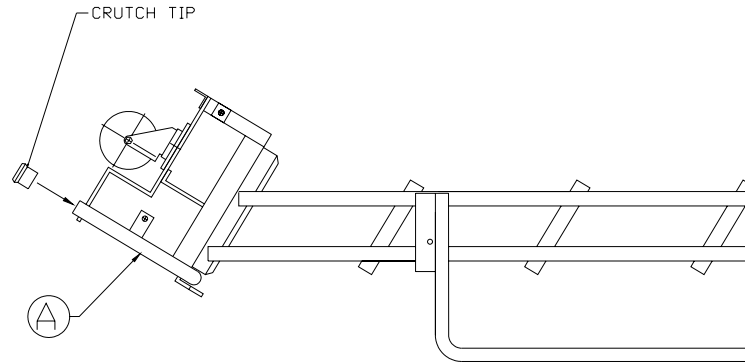


DRAWING B

STEP 5A – CRUTCH TIP INSTALLATION

INSTALL RUBBER CRUTCH TIPS ONTO FRONT LEGS (SEE DRAWING C).

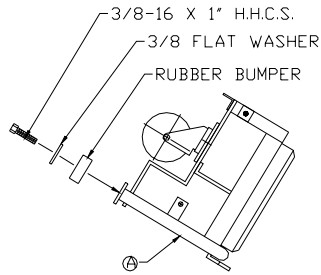
NOTE: IF CRUTCH TIPS ARE NOT PROVIDED – PLEASE PROCEED TO STEP 5B



DRAWING C

STEP 5B – RUBBER BUMPER INSTALLATION

USING (2) 3/8-16 x 1" HEX HEAD CAP SCREWS & 3/8 FLAT WASHERS, BOLT RUBBER BUMPERS TO FRONT LEG ASSEMBLY (A) (SEE DRAWING D).



DRAWING D

STEP 6 – FRAME ASSEMBLY

NOTE: BACK PANEL (C) HAS BOTH ROUND AND SLOTTED HOLES, THE ROUND HOLES ARE AT THE BOTTOM OF THE STILE & THE SLOTTED HOLES ARE AT THE TOP OF THE STILE. USING (6) 3/8-16 x 1” HEX HEAD CAP SCREWS & LOCKNUTS, BOLT THE TOP OF BACK PANEL (C) TO THE TOP PLATFORM BRACKET (1) (SEE DRAWING B). BOLT THE BOTTOM OF BACK PANEL (C) TO BASE PANEL (E) ON THE INSIDE OF LUG (2) (SEE DRAWING B). BOLT BASE PANEL (E) TO FRONT LEG LUG (3) (SEE DRAWING B).

NOTE: DO NOT TIGHTEN THESE BOLTS AT THIS TIME.

STEP 7 – EXTENDED PLATFORMS ONLY (EXCEPT 3 STEP)

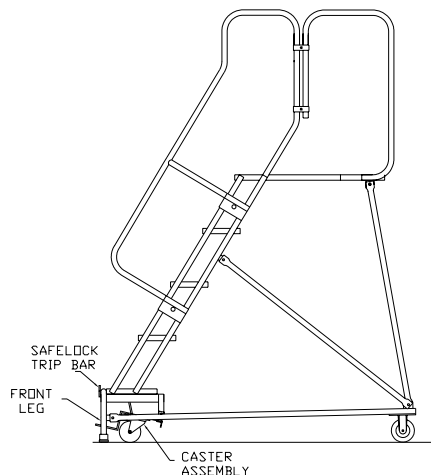
BOLT DIAGONAL BRACE (F) TO THE OUTSIDE OF LUG (2) ON BASE PANEL (E) AND OUTSIDE OF LUG (4) ON STAIRWAY UNIT (D) USING (2) 3/8-16 x 1” HEX HEAD CAP SCREWS & LOCKNUTS (SEE DRAWING B).

NOTE: DO NOT TIGHTEN THESE BOLTS AT THIS TIME.

STEP 8 - COMPLETION

STAND LADDER UPRIGHT AS SHOWN IN (SEE DRAWING E). ACTIVATE SAFELOCK BY STEPPING ON TRIP BAR, LOCATED IN FRONT OF FIRST STEP. THIS SETS THE LADDER ON THE CRUTCH TIPS/RUBBER BUMPERS, TO LEVEL.

**YOU MAY NOW TIGHTEN ALL BOLTS INSTALLED.
DO NOT PROCEED UNTIL LADDER IS STABLE!**



QUESTIONS OR INQUIRIES SHOULD BE DIRECTED TO:

COTTERMAN CO.

P.O. BOX 168

CROSWELL, MICHIGAN 48422

PHONE: (810) 679-4400 FAX: (810) 679-4510

E-MAIL: info@cotterman.com