

**ASSEMBLY OF THE
KNOCKED-DOWN LADDERS:
17, 18 & 19 STEP WITH 10", 12", 20", 24" & 30" DEEP TOP STEP
AND SAFELOCK**

TOOLS REQUIRED FOR ASSEMBLY	
1	RUBBER Mallet
1	STEP LADDER
1	7/16" WRENCHES
2	9/16" WRENCHES
2	1/2" WRENCHES

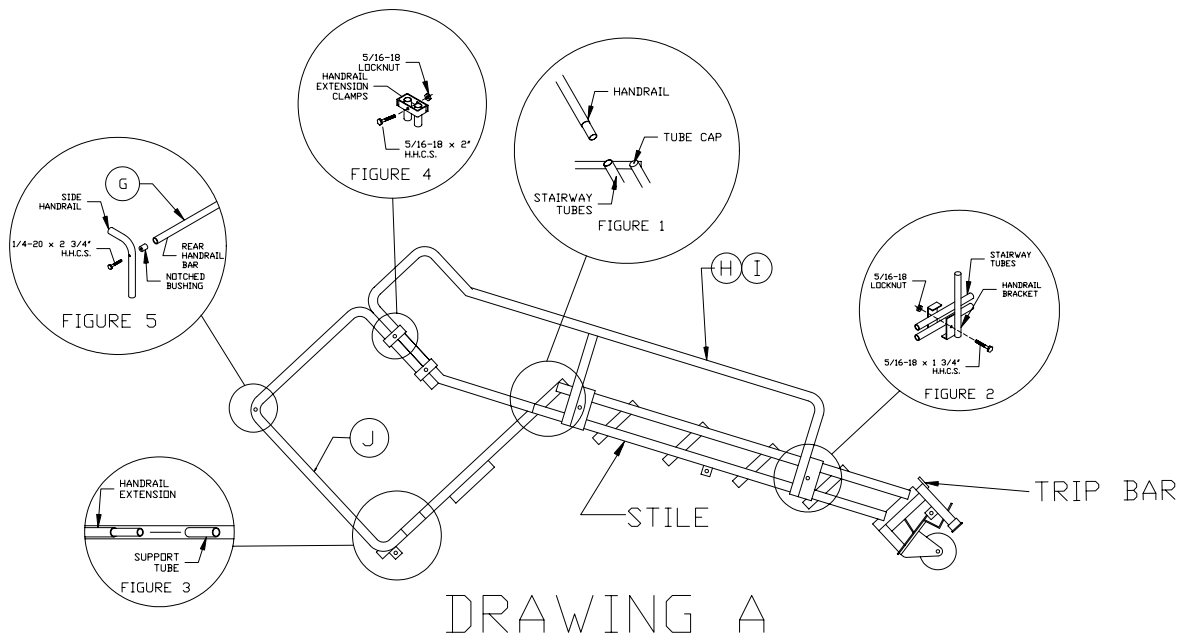
WARNING:

ASSEMBLY OF THESE TYPES OF LADDERS IS INHERENTLY DANGEROUS. PLEASE TAKE ALL PRECAUTIONS NECESSARY DURING THE ASSEMBLY PROCESS. ALWAYS USE A SEPARATE LADDER TO FINISH ASSEMBLY IN HIGH PLACES. NEVER CLIMB A LADDER THAT IS NOT COMPLETELY ASSEMBLED. A FALL RESULTING IN SERIOUS INJURY OR DEATH CAN OCCUR IF ANOTHER LADDER IS NOT USED DURING ASSEMBLY. USE PROPER LIFTING MECHANICS WHEN ASSEMBLING A LADDER. NEVER ASSEMBLE A LADDER ALONE.

STEP 1 – INSTALL HANDRAILS

UNPACKAGE AND SORT ALL COMPONENTS. START BY PLACING THE LADDER STILE ON THE FLOOR, WITH THE STILES FACING UPWARD. SLIP THE HANDRAILS (H, I) INTO THE REAR STAIRWAY TUBES (**DRAWING A, FIGURE 1**). USE THE RUBBER Mallet AS NEEDED FOR MATING PARTS. CLAMP HANDRAILS TO OUTSIDE OF STAIRWAY TUBES USING HANDRAIL BRACKETS, 5/16-18 x 1 3/4" HEX HEAD CAP SCREWS AND LOCKNUTS (**DRAWING A, FIGURE 2**).

NOTE: DO NOT TIGHTEN ANY BOLTS UNTIL INSTRUCTED TO DO SO.



STEP 2 – EXTENDED PLATFORMS ONLY

INSTALL HANDRAIL EXTENSION PANELS (J) INTO SUPPORT TUBES LOCATED ON THE SIDE OF THE PLATFORM (**DRAWING A, FIGURE 3**). USE THE RUBBER Mallet AS NEEDED FOR MATING PARTS. CLAMP HANDRAIL EXTENSION PANEL TO HANDRAIL PANELS USING EXTENSION CLAMPS AND 5/16-18 x 2" HEX HEAD CAP SCREWS & LOCKNUTS (SEE **DRAWING A, FIGURE 4**).

**NOTE: THE HANDRAILS EXTENSION PANELS ARE NOT
ON THE STANDARD PLATFORM LADDERS**

STEP 3

INSERT NOTCHED BUSHING INTO EACH END OF REAR HANDRAIL BARS (G). POSITION BAR BETWEEN MOUNTING HOLES ON TOP OF SIDE HANDRAILS USING (4) 1/4-20 x 2 3/4" HEX HEAD CAP SCREWS (DRAWING A, FIGURE 5).

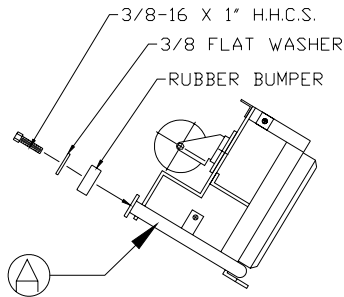
YOU MAY NOW TIGHTEN ALL HANDRAIL BOLTS.

STEP 4

LAY STAIRWAY UNIT ON ITS SIDE. BE SURE TO PLACE THE STAIRWAY ON A PROTECTIVE SURFACE SO THE FINISH DOES NOT GET DAMAGED (SEE DRAWING C).

STEP 5 – RUBBER BUMPER

USING (3) 3/8-16 x 1" HEX HEAD CAP SCREWS & 3/8 WASHERS. BOLT RUBBER BUMPERS TO FRONT LEG ASSEMBLY (A) (SEE DRAWING B).

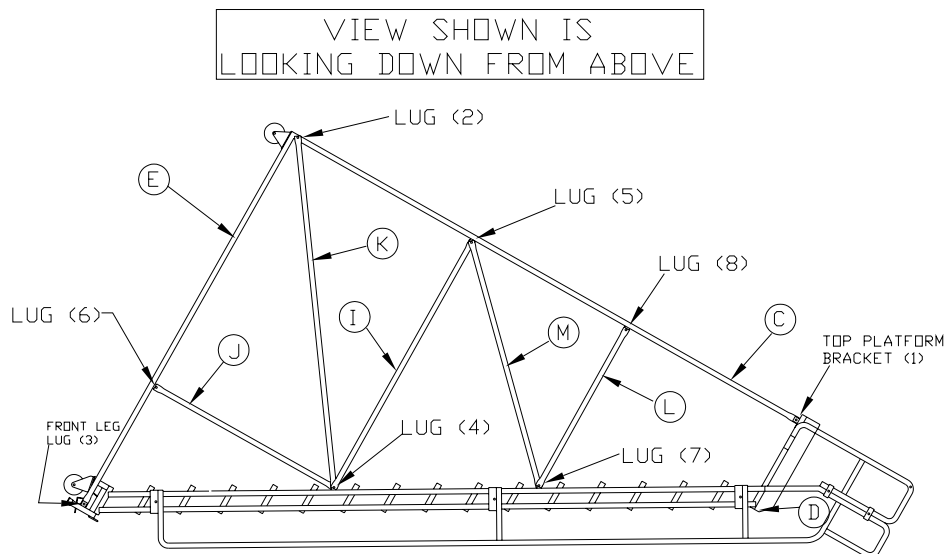


DRAWING B

STEP 6 – FRAME ASSEMBLY

NOTE: BACK PANEL (C) HAS BOTH ROUND AND SLOTTED HOLES, THE ROUND HOLES ARE AT THE BOTTOM & THE SLOTTED HOLES ARE AT THE TOP. USING (6) 3/8-16 x 1" HEX HEAD CAP SCREWS & LOCKNUTS, BOLT THE TOP OF BACK PANEL (C) TO THE TOP PLATFORM BRACKET (SEE DRAWING C). BOLT THE BOTTOM OF BACK PANEL (C) TO BASE PANEL (E) ON THE INSIDE OF LUG (1) (SEE DRAWING C). BOLT BASE PANEL (E) TO FRONT LEG LUG (3) (SEE DRAWING C).

NOTE: DO NOT TIGHTEN THESE BOLTS AT THIS TIME



DRAWING C

STEP 7

USING (2) 3/8-16 x 1 1/4" HEX HEAD CAP SCREWS & LOCKNUTS, BOLT DIAGONAL BRACE (K) TO THE OUTSIDE OF LUG (2) ON BASE PANEL (E) AND INSIDE OF LUG (4) ON STAIRWAY UNIT (D) (**SEE DRAWING C**).

NOTE: DO NOT TIGHTEN THESE BOLTS AT THIS TIME

STEP 8

USING (4) 3/8-16 x 1" HEX HEAD CAP SCREWS & LOCKNUTS, BOLT HORIZONTAL BRACE (I) TO THE OUTSIDE LUG (4) ON STAIRWAY UNIT (D) AND INSIDE OF LUG (5) ON BACK PANEL (C). BOLT VERTICAL BRACE (J) TO THE OUTSIDE OF LUG (6) ON BASE PANEL (E) AND INSIDE OF LUG (4) ON STAIRWAY UNIT (D) (**SEE DRAWING C**).

NOTE: DO NOT TIGHTEN THESE BOLTS AT THIS TIME

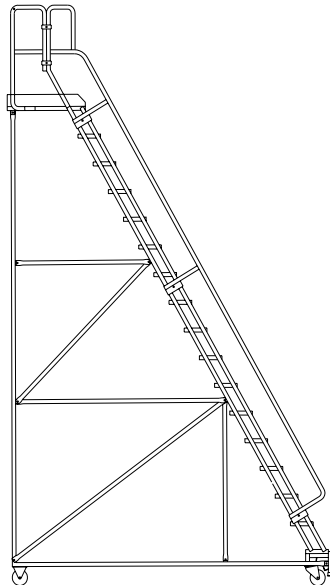
STEP 9

USING (4) 3/8-16 x 1" HEX HEAD CAP SCREWS & LOCKNUTS, BOLT UPPER HORIZONTAL BRACE (L) TO THE OUTSIDE OF LUG (7) ON STAIRWAY UNIT (D) AND OUTSIDE OF LUG (8) ON BACK PANEL (C) (**SEE DRAWING C**). BOLT UPPER DIAGONAL BRACE (M) TO THE INSIDE OF LUG (7) ON STAIRWAY UNIT (D) AND OUTSIDE OF LUG (5) ON BACK PANEL (C) (**SEE DRAWING C**).

STEP 10 - COMPLETION

STAND LADDER UPRIGHT AS SHOWN (**SEE DRAWING D**). ACTIVATE SAFELOCK BY STEPPING ON TRIP BAR, LOCATED IN FRONT OF FIRST STEP. THIS SETS THE LADDER ON THE RUBBER BUMPERS TO LEVEL.

YOU MAY NOW TIGHTEN ALL BOLTS INSTALLED.
DO NOT PROCEED UNTIL LADDER IS STABLE!



DRAWING D

QUESTIONS OR INQUIRIES SHOULD BE DIRECTED TO:
COTTERMAN COMPANY
P.O. BOX 168
CROSWELL, MICHIGAN 48422
PHONE: (810) 679-4400 FAX: (810) 679-4510
E-MAIL: info@cotterman.com