

**ASSEMBLY OF THE  
KNOCKED-DOWN LADDERS:**

12 to 16 STEPS WITH 10", 12", 20", 24" & 30" DEEP TOP STEP  
AND SAFELOCK

TOOLS REQUIRED FOR ASSEMBLY	
1	RUBBER Mallet
1	STEP LADDER
1	7/16" WRENCHES
2	9/16" WRENCHES
2	1/2" WRENCHES

**WARNING:**

**ASSEMBLY OF THESE TYPES OF LADDERS IS INHERENTLY DANGEROUS. PLEASE TAKE ALL PRECAUTIONS NECESSARY DURING THE ASSEMBLY PROCESS. ALWAYS USE A SEPARATE LADDER TO FINISH ASSEMBLY IN HIGH PLACES. NEVER CLIMB A LADDER THAT IS NOT COMPLETELY ASSEMBLED. A FALL RESULTING IN SERIOUS INJURY OR DEATH CAN OCCUR IF ANOTHER LADDER IS NOT USED DURING ASSEMBLY. USE PROPER LIFTING MECHANICS WHEN SETTING UP THE LADDER. NEVER ASSEMBLE THE LADDER ALONE.**

**STEP 1 – INSTALL HANDRAILS**

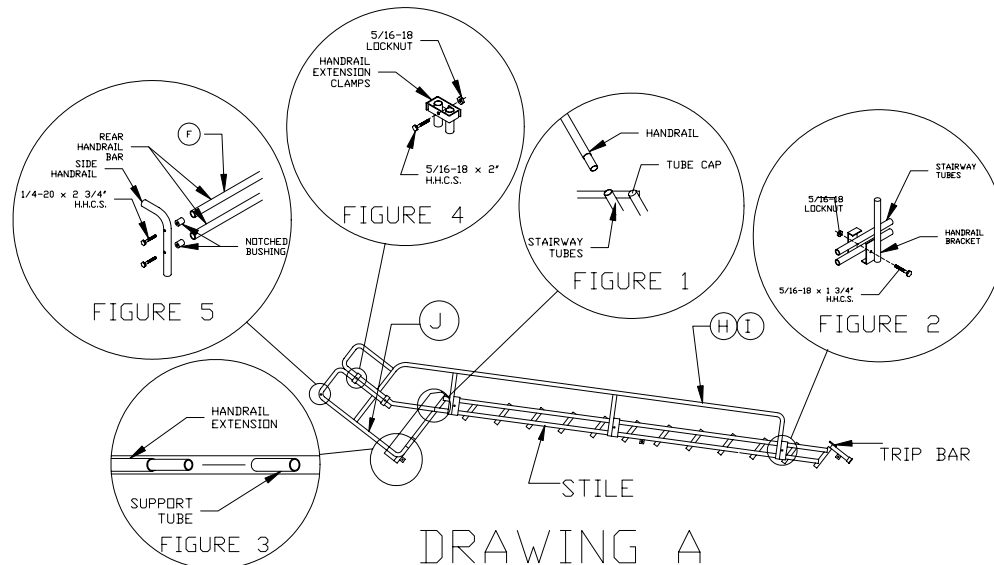
UNPACKAGE AND SORT ALL COMPONENTS. START BY PLACING THE LADDER STILE ON THE FLOOR, WITH THE STILES FACING UPWARD. SLIP THE HANDRAILS (H, I) INTO THE REAR STAIRWAY TUBES (**DRAWING A, FIGURE 1**). USE THE RUBBER Mallet AS NEEDED FOR MATING PARTS. CLAMP HANDRAILS TO OUTSIDE OF STAIRWAY TUBES USING HANDRAIL BRACKETS, 5/16-18 x 1 3/4" HEX HEAD CAP SCREWS AND LOCKNUTS (**DRAWING A, FIGURE 2**).

**NOTE: DO NOT TIGHTEN ANY BOLTS UNTIL INSTRUCTED TO DO SO.**

**STEP 2 – EXTENDED PLATFORMS ONLY**

INSTALL HANDRAIL EXTENSION PANELS (J) INTO SUPPORT TUBES LOCATED ON THE SIDE OF THE PLATFORM (**DRAWING A, FIGURE 3**). CLAMP HANDRAIL EXTENSION PANEL TO HANDRAIL PANELS USING EXTENSION CLAMPS AND 5/16-18 x 2" HEX HEAD CAP SCREWS & LOCKNUTS (**SEE DRAWING A, FIGURE 4**).

**NOTE: THE HANDRAILS EXTENSION PANELS ARE NOT ON THE STANDARD PLATFORM LADDERS**



### **STEP 3**

INSERT NOTCHED BUSHING INTO EACH END OF REAR HANDRAIL BARS (F). POSITION BAR BETWEEN MOUNTING HOLES ON TOP OF SIDE HANDRAILS USING (4) ¼-20 x 2 ¾" HEX HEAD CAP SCREWS (**DRAWING A, FIGURE 5**).

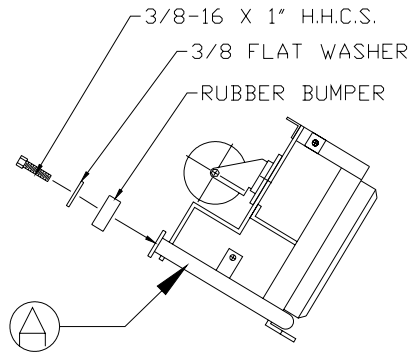
**YOU MAY NOW TIGHTEN ALL HANDRAIL BOLTS.**

### **STEP 4**

LAY STAIRWAY UNIT ON ITS SIDE. BE SURE TO PLACE STAIRWAY ON A PROTECTIVE SURFACE, SO THE FINISH DOES NOT GET DAMAGED (**SEE DRAWING C**).

### **STEP 5 – RUBBER BUMPER**

USING (3) 3/8-16 x 1" HEX HEAD CAP SCREWS & 3/8 WASHERS. BOLT RUBBER BUMPERS TO FRONT LEG ASSEMBLY (A) (**SEE DRAWING B**).



DRAWING B

### **STEP 6 – FRAME ASSEMBLY**

**NOTE: BACK PANEL (C) HAS BOTH ROUND AND SLOTTED HOLES, THE ROUND HOLES ARE AT THE BOTTOM & THE SLOTTED HOLES ARE AT THE TOP.** USING (6) 3/8-16 x 1" HEX HEAD CAP SCREWS & LOCKNUTS, BOLT THE TOP OF BACK PANEL (C) TO THE TOP PLATFORM BRACKET (**SEE DRAWING C**). BOLT THE BOTTOM OF BACK PANEL (C) TO BASE PANEL (E) ON THE INSIDE OF LUGS (1) (**SEE DRAWING C**). BOLT BASE PANEL (E) TO FRONT LEG LUGS (3) (**SEE DRAWING C**).

**NOTE: DO NOT TIGHTEN THESE BOLTS AT THIS TIME**

### **STEP 7**

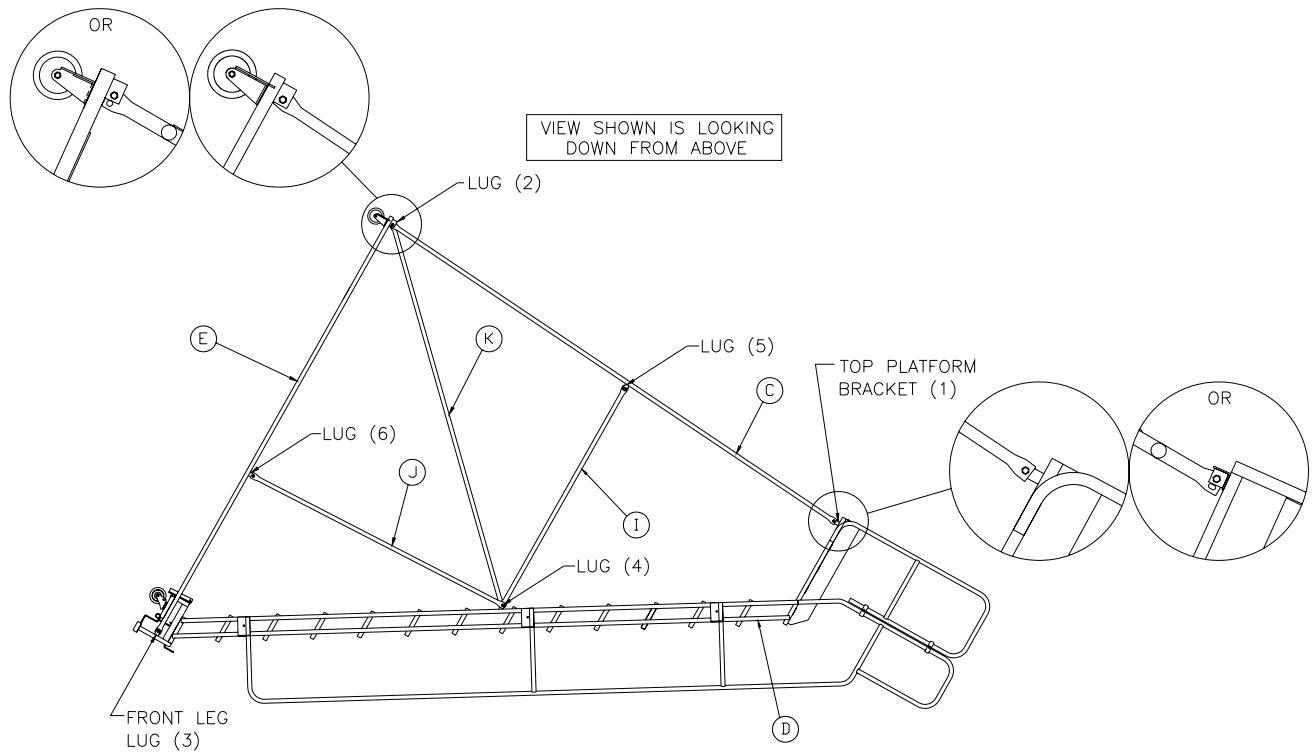
USING (2) 3/8-16 x 1 ¼" HEX HEAD CAP SCREWS & LOCKNUTS, BOLT DIAGONAL BRACE (K) TO THE OUTSIDE OF LUGS (2) ON BASE PANEL (E) AND INSIDE OF LUGS (4) ON STAIRWAY UNIT (D) (**SEE DRAWING C**).

**NOTE: DO NOT TIGHTEN THESE BOLTS AT THIS TIME**

### **STEP 8**

USING (4) 3/8-16 x 1" HEX HEAD CAP SCREWS & LOCKNUTS, BOLT HORIZONTAL BRACE (I) TO THE OUTSIDE OF LUGS (4) ON STAIRWAY UNIT (D) AND OUTSIDE OF LUGS (5) ON BACK PANEL (C). BOLT VERTICAL BRACE (J) TO THE OUTSIDE OF LUGS (6) ON BASE PANEL (E) AND INSIDE OF LUGS (4) ON STAIRWAY UNIT (D) (**SEE DRAWING C**).

**NOTE: DO NOT TIGHTEN THESE BOLTS AT THIS TIME**

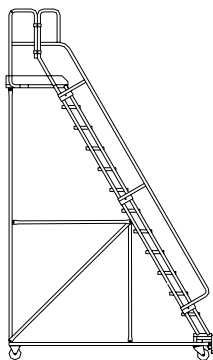


DRAWING C

**STEP 9 - COMPLETION**

STAND LADDER UPRIGHT AS SHOWN (**DRAWING D**). ACTIVATE SAFELOCK BY STEPPING ON TRIP BAR, LOCATED IN FRONT OF FIRST STEP. THIS SETS THE LADDER ON THE RUBBER BUMPERS TO LEVEL

**YOU MAY NOW TIGHTEN ALL BOLTS INSTALLED.** DO NOT PROCEED UNTIL LADDER IS STABLE!



DRAWING D

QUESTIONS OR INQUIRIES SHOULD BE DIRECTED TO:

**COTTERMAN COMPANY**

**P.O. BOX 168**

**CROSWELL, MICHIGAN 48422**

**PHONE: (810) 679-4400 FAX: (810) 679-4510**

**E-MAIL: [info@cotterman.com](mailto:info@cotterman.com)**