

**ASSEMBLY OF THE  
7180 STRAIGHT SIDE STEEL LADDER**

<b>TOOLS REQUIRED FOR ASSEMBLY</b>	
SAFETY GLASSES	(2) 1 / 2 " WRENCHES OR SOCKETS
STEP LADDER OF APPROPRIATE HEIGHT	(2) 7 / 16" WRENCHES OR SOCKETS
HACKSAW	FLAT HEAD SCREW DRIVER

**ASSEMBLY PARTS – INCLUDED IN PACKAGING**

<b>7180 Straight Side WITH #57 WHEEL ASSEMBLY</b>		<b>TRACK and BRACKETS</b>	
1	LADDER	AS ORDERED	STRAIGHT TRACK
1	TOP SHELF	AS ORDERED	CURVED TRACK
2	UPPER FIXTURES	AS REQUIRED	L 10 – BRACKET
8	1/4- 20 x 3/4" BUTTON HEAD MACHINE SCREW	AS REQUIRED	L 11 – BRACKET
8	HEX LOCKNUTS	AS REQUIRED	L 11T – BRACKET
1	LOWER RIGHT FIXTURE	AS REQUIRED	L 15 – BRACKET
1	LOWER LEFT FIXTURE	AS REQUIRED	L 17 – BRACKET
2	5 INCH WHEELS	AS REQUIRED	L 56 – BRACKET
2	5/16 – 18 x 2" HEX HEAD CAP SCREW		
2	5/16 – 18 HEX LOCKNUT		

**WARNING:**

**ASSEMBLY OF THESE TYPES OF LADDERS CAN BE INHERENTLY DANGEROUS. PLEASE TAKE ALL PRECAUTIONS NECESSARY DURING THE ASSEMBLY PROCESS. ALWAYS USE A SEPARATE LADDER TO FINISH ASSEMBLY IN HIGH PLACES. NEVER CLIMB A LADDER THAT IS NOT COMPLETELY ASSEMBLED. DO NOT ASSEMBLE OR USE A LADDER WITH MISSING OR DAMAGED PARTS. USE PROPER LIFTING MECHANICS WHEN ASSEMBLING A LADDER. WATCH FOR OVERHEAD ELECTRICAL HAZARDS AND OBSTRUCTIONS.**

**INSTALLATION OF THE TRACK  
FOR THE STRAIGHT SIDE STEEL LADDER**

INSTALLATION WILL DEPEND UPON THE TYPE OF BRACKETS FURNISHED. THE BRACKETS FOR SUPPORTING THE TRACK ARE USUALLY SECURED ON THE SHELVING UPRIGHTS OR ON A HORIZONTAL SURFACE, SUCH AS THE TOP OF A SHELF. THE BRACKETS ARE USUALLY LOCATED AT ABOUT 3 FOOT INTERVALS.

- WHEN THE BRACKETS ARE FASTENED TO THE UPRIGHTS, THE TRACK SHOULD USUALLY BE POSITIONED SO THE TOP OF THE BRACKETS ARE LEVEL WITH THE TOP OF THE SHELF.

**NOTE: SEE THE ATTACHED PACKING LIST FOR THE TRACK HEIGHT FOR WHICH YOUR LADDER WAS DESIGNED.**

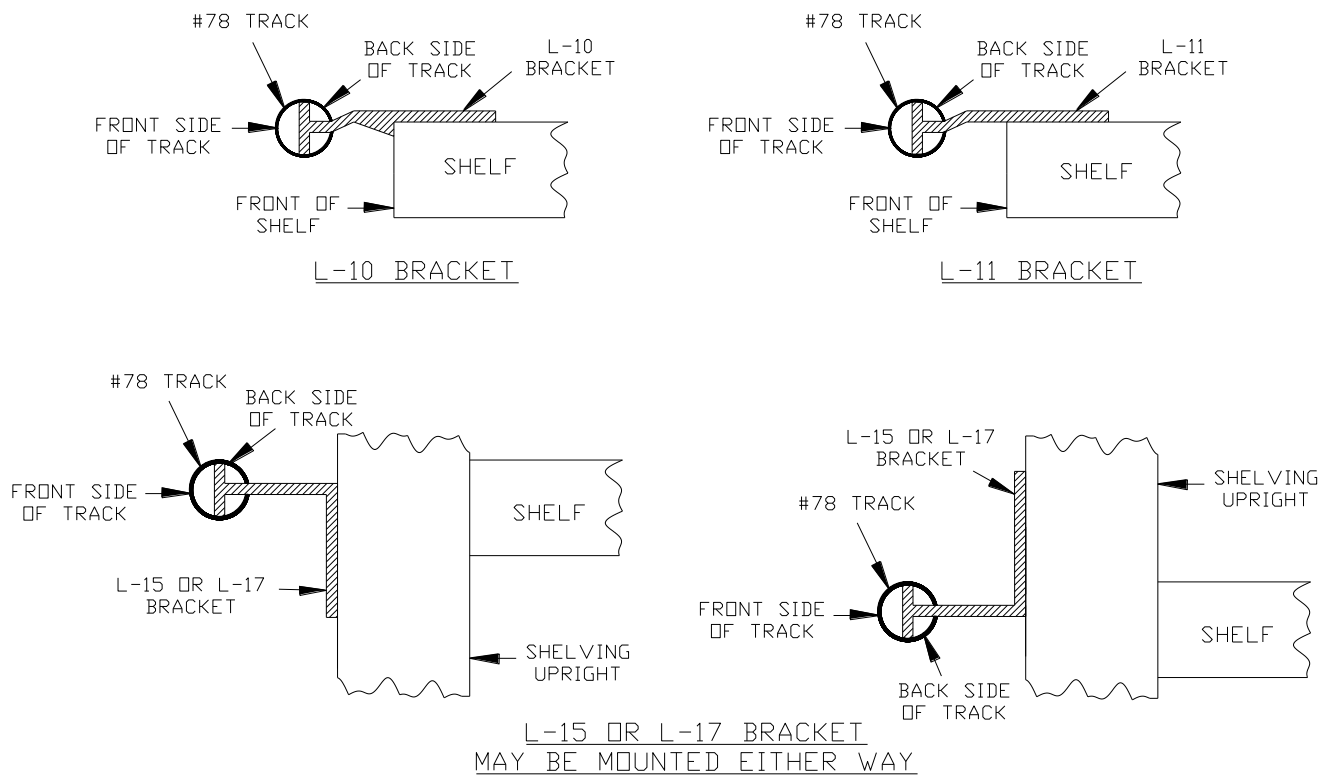
**STEP 1 – LAYOUT FOR THE TRACK**

- START BY LAYING THE TRACK FROM END TO END ON THE FLOOR IN FRONT OF THE SHELVING UNIT.
  - IF ONE END OF THE SHELVING IS AGAINST A WALL, START FROM THAT END.
  - MAKE SURE TO ALIGN THE FIRST END OF THE TRACK WITH THE END OF THE SHELVING UNIT.
  - IF NECESSARY, REARRANGE THE VARIOUS SECTIONS SO THAT NONE OF THE JOINTS OCCUR AT THE BRACKETS, OR WITHIN 5 INCHES OF THE BRACKETS.

**STEP 2 – PLACEMENT OF THE BRACKETS – (SEE DRAWING A)**

- INSERT THE REQUIRED NUMBER OF CENTER BRACKETS, FOR THE FIRST LENGTH OF TRACK, INTO THE TRACK OPENING.
- ADJUST THE CENTER BRACKETS TO THE APPROXIMATE LOCATIONS WHERE THEY WILL ATTACH TO THE SHELVING UNIT.

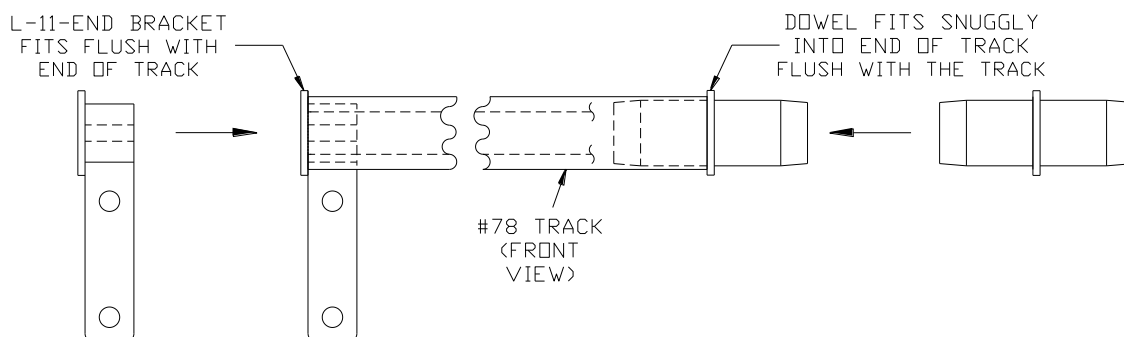
INSTALLATION POSSIBILITIES FOR THE DIFFERENT STYLES OF BRACKETS



**DRAWING A**

**STEP 3 – PLACEMENT OF THE END BRACKET – (SEE DRAWING B)**

- a) ONCE THE CENTER BRACKETS HAVE BEEN INSERTED AND ADJUSTED TO THEIR PROPER LOCATIONS, TAKE THE CORRESPONDING END BRACKET AND INSERT THE STEEL DISC FLUSH AGAINST THE END OF THE TRACK.



**DRAWING B**

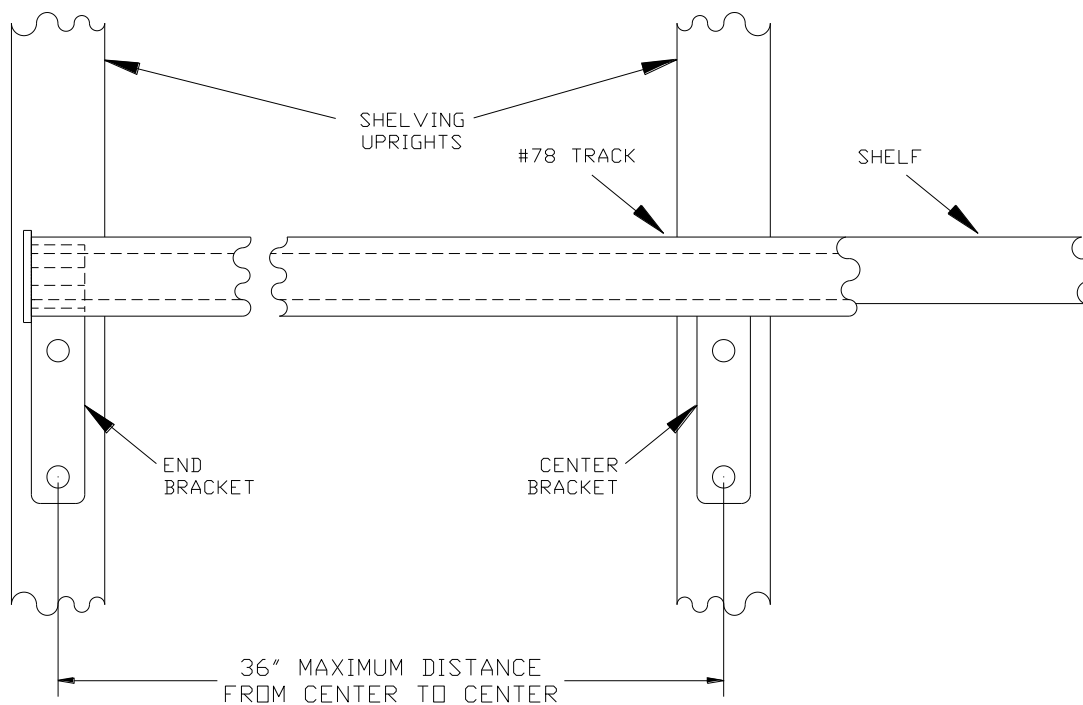
**DRAWING C**

**STEP 4 – DOWEL ATTACHMENT – (SEE DRAWING C)**

- a) AT THE OPPOSITE END, INSERT ONE OF THE JOINT DOWELS. NOTE: THE SHOULDER SHOULD FIT TIGHTLY AGAINST THE END OF THE TRACK.

**STEP 5 – ATTACHING THE FIRST SECTION OF TRACKING – (SEE DRAWING D)**

- a) USING THE INSERTED BRACKETS, BOLT OR SCREW AND DOWEL THE FIRST SECTION OF TRACK TO THE SHELVING.

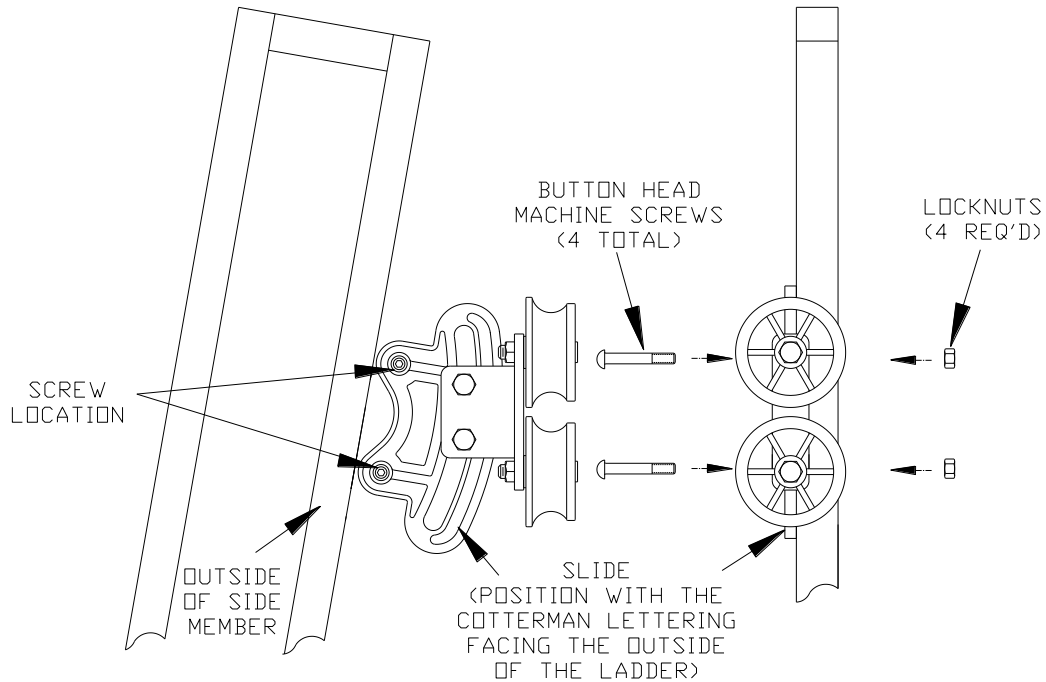


**FRONT VIEW  
DRAWING D**

**STEP 6 – ATTACHING TWO UPPER SLIDE ASSEMBLIES– (SEE DRAWING E)**

- a) ATTACH THE UPPER SLIDE ASSEMBLIES TO THE OUTSIDE OF THE SIDE MEMBERS, USING THE PRE-DRILLED HOLES AND (2) 1/4 - 20 x 3/4" BUTTON HEAD MACHINE SCREW WITH (2) LOCKNUTS PER SLIDE.

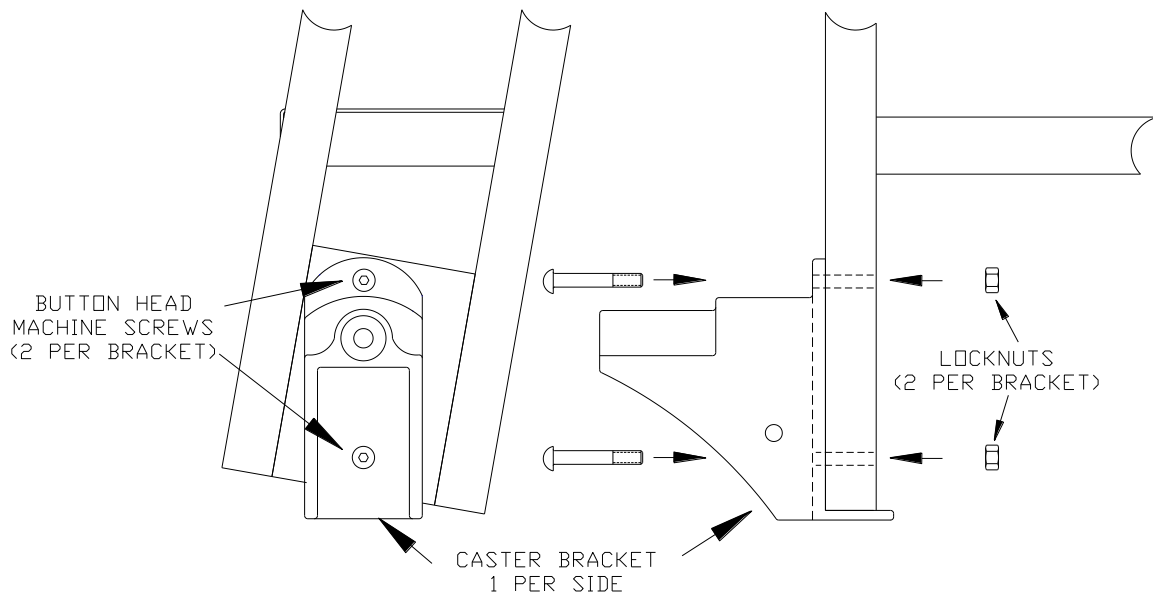
**(NOTE: THE SLIDE LETTERING NEEDS TO BE FACING OUTWARD ON THE LADDER)**



**DRAWING E**

**STEP 7 – ATTACHING TWO LOWER CASTER BRACKET ASSEMBLIES – (SEE DRAWING F)**

- a) ATTACH THE CASTER BRACKET ASSEMBLIES TO THE BOTTOM OF THE SIDE MEMBERS, USING (2) 1/4 - 20 x 3/4" BUTTON HEAD MACHINE SCREW AND (2) 1/4 - 20 HEX LOCKNUTS PER BRACKET.

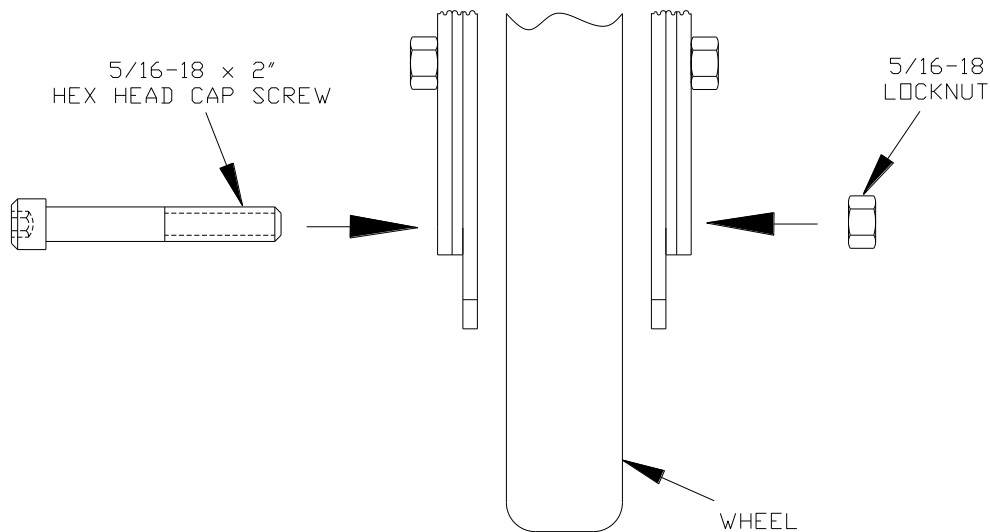


**DRAWING F**

**STEP 8 – WHEEL ASSEMBLY – (SEE DRAWING G)**

- a) CENTER THE 5" WHEEL BETWEEN THE FORKS ON THE CASTER BRACKET AND TIGHTEN USING A 5/16 – 18 x 2" HEX HEAD CAP SCREW AND 5/16 – 18 HEX LOCKNUT.
- b) REPEAT FOR OTHER CASTER BRACKET.

**NOTE: WHEEL MUST HAVE FREEDOM TO ROTATE,  
ONLY TIGHTEN ENOUGH TO SECURE WHEEL ASSEMBLY.**



**DRAWING G**

**STEP 9 – LADDER INSTALLATION ON THE TRACK**

- a) ROLL THE LADDER ONTO THE SECTION OF TRACK THAT HAS BEEN INSTALLED.
- b) TEST THE LADDER TO MAKE SURE IT CAN BE PULLED OUT TO THE PROPER CLIMBING ANGLE.
- c) ALSO, MAKE SURE THE LADDER CAN BE PUSHED AGAINST THE SHELVING UNIT AT THE BOTTOM.

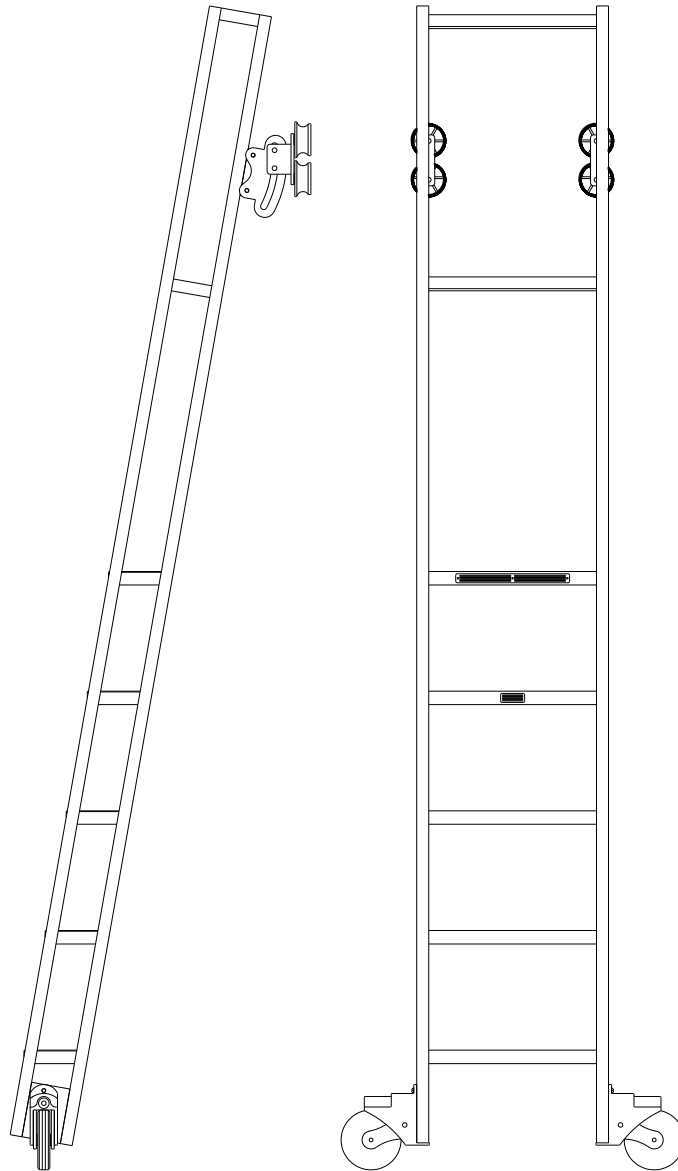
**STEP 10 – ADDITIONAL TRACK SECTION INSTALLATION**

- a) SLIDE THE REQUIRED BRACKETS INTO THE NEXT LENGTH OF TRACK.
- b) PUSH THAT LENGTH OF TRACK OVER THE EXPOSED DOWEL OF THE ALREADY ATTACHED SECTION.
- c) THIS SECTION SHOULD BUTT AGAINST THE DOWEL SHOULDER.
- d) THEN FASTEN THE BRACKETS TO THE SHELVING.
- e) CONTINUE UNTIL ALL THE TRACK LENGTHS IN THE RUN, EXCEPT THE LAST LENGTH, ARE INSTALLED.

**STEP 11 – TRACK COMPLETION**

- a) MEASURE THE LENGTH OF TRACK NEEDED TO COMPLETE THE RUN, ALLOWING FOR PROPER PLACEMENT OF THE END BRACKET.
- b) CUT OFF THE TRACK TO THE REQUIRED LENGTH WITH A HACKSAW.
- c) SLIDE IN THE REQUIRED NUMBER OF CENTER BRACKETS AND INSERT THE OTHER END BRACKET WITH THE STEEL DISC FLUSH AGAINST THE END OF THE TRACK.
- d) INSTALL THE LAST LENGTH OF TRACK TO THE LAST DOWEL AS PREVIOUSLY DESCRIBED.
- e) THEN FASTEN THE BRACKETS TO THE SHELVING.

**BE SURE TO READ THE SAFETY INSTRUCTIONS ATTACHED TO LADDER**



**QUESTIONS OR INQUIRIES SHOULD BE DIRECTED TO:  
COTTERMAN COMPANY  
P.O. BOX 168  
CROSWELL, MICHIGAN 48422  
PHONE: (810) 679-4400    FAX: (810) 679-4510  
E-MAIL: [info@cotterman.com](mailto:info@cotterman.com)**